



2012 SCHOOL REPORT CARD

Education Oversight Board / Office of Accountability

655 Research Parkway, Suite 301, Oklahoma City, OK, 73104 (405) 225-9470 Fax: (405) 225-9474 Web: <http://www.SchoolReportCard.org>

UNION HIGH SCHOOL (11-12)

UNION PUBLIC SCHOOLS

6636 S MINGO RD, TULSA, OK 74133-3247

Telephone: (918) 357-4323

72-1009-705

Community Characteristics

Socioeconomic Data

	School	District	State Average
Ethnic Makeup Based upon Fall Enrollment:			
Caucasian	53%	49%	58%
Black	15%	14%	10%
Asian	8%	7%	2%
Hispanic	18%	24%	13%
Native American	6%	6%	17%
Average Property Valuation per Student (12/2012)		\$47,900	\$42,215
Students Eligible for Free/Reduced Lunch	47%	59%	61%

U.S. Census Data (American Community Survey 2007-2011 5-Year Estimates Unless Otherwise Noted)

District Population (Census 2010)		79,066	7,186
Poverty Rate		12%	16%
Unemployment Rate		4%	6%
Average Household Income		\$72,451	\$59,961
Single-Parent Families		33%	33%
Highest Educational Level for Adults Age 25+			
College Degree		35%	23%
H.S. Diploma w/o College Degree		56%	63%
Less than 12th Grade Education		9%	14%

Preparation, Motivation & Parental Support

1st-3rd Graders Receiving Reading Remediation		43%	36%
Average Number of Days Absent per Student	11.9	8.9	9.3
Mobility Rate (Incoming Students)	11%	13%	11%
Suspension to Student Ratio: (Higher ratio is better.)			
There was 1 suspension (of 10 days or less) for every ___ students	22.0	19.1	11.6
There was 1 suspension (of more than 10 days) for every ___ students	31.7	90.3	127.3
Parents Attending Parent/Teacher Conference	56%	82%	73%
Patrons' Volunteer Hours per Student	1.5	3.1	3.2

Juvenile Offenders & Offenses (Office of Juvenile Affairs)*

One out of every ___ students was charged. (Higher ratio is better.)		70.4	88.0
Of those charged, each averaged ___ offense(s).		1.6	2.0
Of those charged, ___ were alleged gang members.		10	0.5

*These statistics are provided as another indicator of the environment in which schools must operate. In most cases the offenses were not committed at school.

Symbols Used on this Report

DNA = Data Not Available
NA = Not Applicable

RM = Revised Methodology
ADM = Average Daily Membership (Average Enrollment)

FTE = Full Time Equivalent

** = Data Protected by Privacy Laws
FTR = School/District Failed to Respond with Useable Data

2011-2012 School Educational Process

Classroom & Administration Characteristics

	School	District Total (All Schools)	High School State Average
Fall Enrollment	2,158	14,990	361
Non-Special Ed. Teachers (FTE):			
Number of Teachers	88.9	741.2	20.8
Average Salary (w/ Fringe)	\$45,887	\$43,512	\$45,039
Teachers with Advanced Degree(s)	36.3%	25.7%	30.5%
Average Years of Experience	14.2	11.5	13.3
Students in Special Education	9.8%	10.2%	14.9%
Special Education Teachers (FTE)	7.4	69.4	2.8
Counselors (FTE)	6.0	32.3	1.3
Other Certified Professional Staff (FTE)	4.6	89.5	1.3
Administrators (FTE)	13.6	62.3	1.7

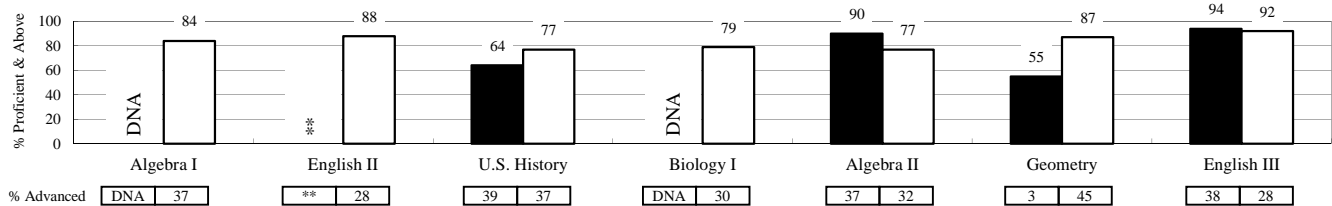
High School Curriculum (Units Offered in Selected Subject Areas)

Language Arts	11.5	8.1
Science	16.0	6.3
Math	11.0	6.6
Social Studies	11.0	5.6
Fine Arts	18.0	6.9
Languages (non-English)	7.0	2.9
Total	74.5	36.5

2011-2012 Student Performance

High School End-of-Instruction Tests*

Results for non-high school students may be posted on the K-8 report card.



*Test results were only calculated for Regular Education-Full Academic Year students.

■ This School □ State Average

Additional High School Performance Measures

	This School	District	High School State Average
Senior Graduation Rate (2012 Seniors)	97.7%	97.7%	97.7%
4-Year Dropout Rate (Class of 2012)	4.9%	11.2%	9.7%
Average GPA of HS Seniors (2012 Seniors)	2.9	2.9	3.0
Career-Tech Occupationally-Specific Program Participation (2012 Seniors)	51.6%	51.6%	52.2%
Average ACT Score (Class of 2012)	21.6	21.6	20.8
HS Graduates Completing Regents' College-Bound Curriculum (2012 Seniors)	94.4%	94.4%	82.8%
Out-of-State College-Going Rate (2012 Seniors)	5.8%	5.8%	5.4%
Oklahoma College-Going Rate ('08-'10)	57.2%	57.2%	47.8%
Oklahoma College Freshmen taking at least one remedial course in Math, English, Science, or Reading ('09-'11)	40.7%	40.7%	39.9%