

District:

**ARKOMA****LeFLORE County**100 Blocker St  
Arkoma, OK 74901  
(918) 875-3351**Community Characteristics****Community Group: G2****Socioeconomic Data**

	District Community	State Average
Ethnic Makeup Based upon Fall Enrollment:		
Caucasian	93%	59%
Black	0%	9%
Asian	0%	2%
Hispanic	4%	16%
Native American	3%	15%
Average Property Valuation per ADM (12/2015)	\$15,186	\$47,329
Students Eligible for Free/Reduced Lunch	79%	61%

**U.S. Census Data**

American Community Survey (2010-2014 5-Year Estimates):		
District Population	2,070	7,387
Poverty Rate	34%	17%
Unemployment Rate	15%	7%
Average Household Income	\$34,734	\$62,871
Single-Parent Families	27%	34%
Highest Educational Level for Adults Age 25+		
College Degree	9%	24%
H.S. Diploma w/o College Degree	65%	63%
Less than 12th Grade Education	26%	13%

**Preparation, Motivation and Parental Support**

KG-3rd Graders Receiving Reading Remediation	23%	39%
Average Number of Days Absent per Student	12.5	9.8
Mobility Rate (Incoming Students)	14%	10%
Suspension to Student Ratio: ( <i>Higher number is better.</i> )		
1 suspension (<= 10 days) per ___ students	30.2	13.1
1 suspension (> 10 days) per ___ students	None	155.1
Parents Attending at least 1 Parent/Teacher Conf.	77%	74%
Patrons' Volunteer Hours per Student	1.9	3.4

**Juvenile Offenders & Offenses (OJA)**

One out of every ___ students was charged.	423.0	108.6
Of those charged, each averaged ___ offense(s).	1.0	2.1
Of those charged, ___ were alleged gang members.	0	0.4

**Symbols Used on this Report:**

ADM = Average Daily Membership (Average Enrollment)

FTE = Full Time Equivalent

NA = Not Applicable

\*\* = Data Protected by Privacy Laws

FTR = School/District Failed to Respond with Useable Data

DNA = Data Not Available from Providing Agency

RM = Revised Methodology

**Office of Educational  
Quality and Accountability**840 Research Parkway, Suite 455  
Oklahoma City, OK 73104  
(405) 522-5399 Fax: (405) 525-0373  
Web Address: www.EdProfiles.info**District Educational Process****Grade Organization, District Area & Enrollment**

This district offered grades EC-12 in school year 2014-2015. It was comprised of 1 Elementary School(s), 1 MS/JHS, and 1 High School(s). The district covered 4 square miles, with 105.8 students per square mile.

	District	Community Group Avg.	State Avg.
2013/2014 Average Enrollment (ADM)	413.3	356.1	1,292.2
2014/2015 Average Enrollment (ADM)	423.1	356.9	1,299.4
Difference from 2013/2014 to 2014/2015	9.8 (2.4%)	0.8	7.3

**Student Programs**

Students Identified as Gifted/Talented	4.3%	13.2%	14.2%
Students in Special Education	18.4%	20.4%	15.4%
Students as English Language Learners (ELL)	0.0%	1.3%	7.1%

**Classroom Teachers & Professional Support (FTE)**

Non-Special Ed. Teachers:			
Number of Teachers	27.0	22.9	72.4
Avg. Salary (w/ Fringe)	\$40,773	\$43,443	\$44,754
Teachers w/ Advanced Degree(s)	14.3%	24.8%	24.5%
Avg. Years of Experience	9.2	13.1	12.2
Special Education Teachers	2.0	1.9	8.5
Counselors	0.3	0.8	3.1
Other Certified Professional Staff	1.9	1.6	6.9

**School & District Administration (FTE)**

School & District Administrators	3.0	2.6	6.9
Average Salary per Administrative FTE	\$77,239	\$78,382	\$78,349
Teachers per Administrator	9.7	9.5	11.7

**District Revenues (ALL FUNDS)**

Local & County	14.3%	32.2%	40.8%
State	68.1%	52.5%	47.7%
Federal	17.7%	15.4%	11.6%

**District Expenditures (ALL FUNDS)**

	District		Community Group Avg.		State Average	
	%	\$/ADM	%	\$/ADM	%	\$/ADM
Instruction	55.4%	\$4,285	51.9%	\$4,656	53.0%	\$4,177
Student Support	4.8%	\$372	6.2%	\$552	7.0%	\$548
Instructional Support	1.8%	\$138	2.5%	\$219	3.8%	\$296
District Administration	5.9%	\$455	5.4%	\$480	2.9%	\$231
School Administration	6.9%	\$536	5.7%	\$515	5.7%	\$451
District Support	14.9%	\$1,151	18.4%	\$1,650	17.9%	\$1,411
Other	10.3%	\$792	10.0%	\$895	9.7%	\$761
<b>Total</b>	<b>100.0%</b>	<b>\$7,730</b>	<b>100.0%</b>	<b>\$8,966</b>	<b>100.0%</b>	<b>\$7,875</b>
Debt Service in Addition to Above		\$0		\$355		\$845

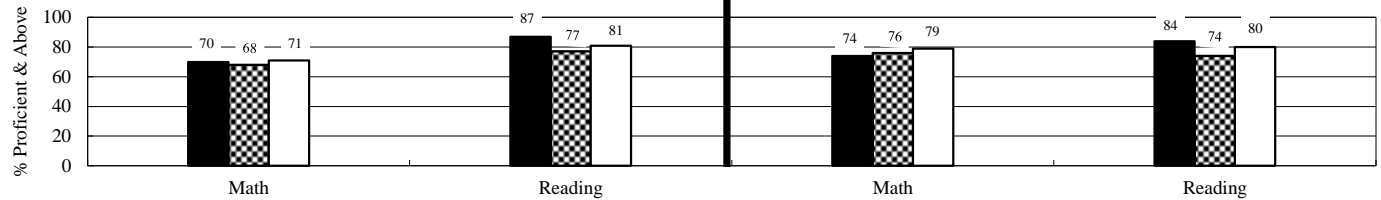
**Average HS Curriculum (Units Offered in Selected Subject Areas)**

	District	Community Group Avg.	State Average
Language Arts	6.0	5.8	7.8
Science	0.0	4.4	6.1
Math	6.0	5.2	6.5
Social Studies	6.5	4.5	5.4
Fine Arts	3.0	3.1	7.0
Languages (non-English)	0.0	0.6	2.5
<b>Total</b>	<b>21.5</b>	<b>23.5</b>	<b>35.3</b>

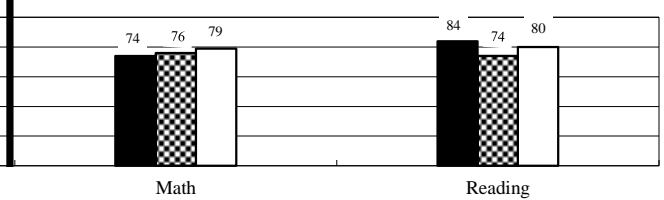
## Student Performance (Regular Education Students, Full Academic Year)

District: ARKOMA

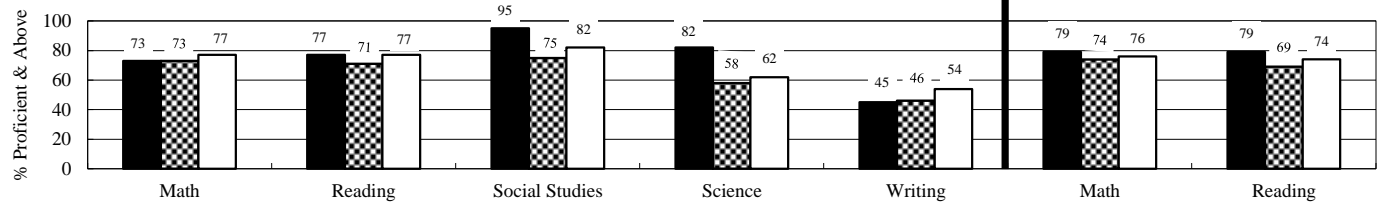
### 3rd Grade Tests\*



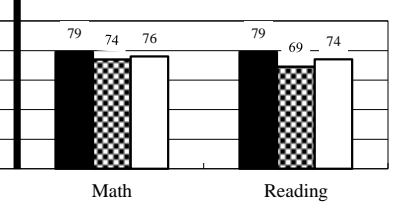
### 4th Grade Tests\*



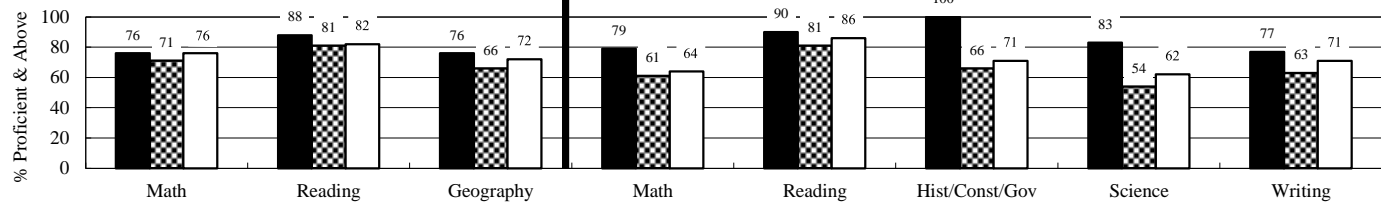
### 5th Grade Tests\*



### 6th Grade Tests\*



### 7th Grade Tests\*

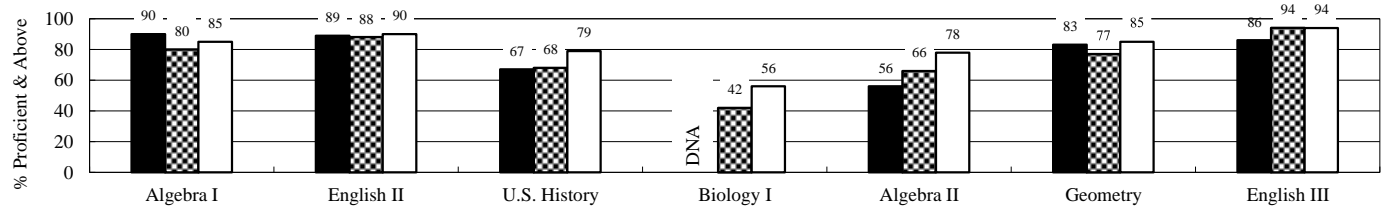


### 8th Grade Tests\*

(Students taking Algebra I do not participate in 8th grade math test.)

### End-of-Instruction Tests\*

(Students are exempt from certain EOI tests if they passed qualified alternative assessments.)



District
  Community Group
  State

### Additional High School Performance Measures

	District	Community Group Average	State Average
Senior Graduation Rate (2015 Seniors)	85.7%	98.5%	98.2%
4-Year Dropout Rate (Class of 2015)	25.0%	6.2%	7.8%
Average GPA of HS Seniors (2015 Seniors)	3.4	3.1	3.1
Career-Tech Occupationally-Specific Program Participation Rate (2015 Seniors)	70.8%	68.8%	49.5%
Average ACT Score (Class of 2015)	17.8	19.3	20.7
HS Graduates Completing Regents' College-Bound Curriculum (2015 Seniors)	100.0%	81.4%	80.5%
Out-of-State College-Going Rate (2015 Seniors)	11.1%	3.0%	5.9%
Oklahoma College-Going Rate			
Oklahoma College Freshmen taking at least one remedial course in Math, English, Science, or Reading			
Oklahoma College Freshmen with GPA 2.0 or Above			

*New methodologies are under development.*