



2012 SCHOOL REPORT CARD

Education Oversight Board / Office of Accountability

655 Research Parkway, Suite 301, Oklahoma City, OK, 73104 (405) 225-9470 Fax: (405) 225-9474 Web: <http://www.SchoolReportCard.org>

ARKOMA HIGH SCHOOL (9-12)

ARKOMA PUBLIC SCHOOLS

PO BOX 349, ARKOMA, OK 74901-0349

Telephone: (918) 875-3353

40-1091-715

Community Characteristics

Socioeconomic Data

	School	District	State Average
Ethnic Makeup Based upon Fall Enrollment:			
Caucasian	90%	93%	58%
Black	2%	1%	10%
Asian	1%	0%	2%
Hispanic	4%	5%	13%
Native American	2%	2%	17%
Average Property Valuation per Student (12/2012)		\$15,600	\$42,215
Students Eligible for Free/Reduced Lunch	80%	83%	61%

U.S. Census Data (American Community Survey 2007-2011 5-Year Estimates Unless Otherwise Noted)

	School	District	State Average
District Population (Census 2010)		2,079	7,186
Poverty Rate		31%	16%
Unemployment Rate		9%	6%
Average Household Income		\$36,215	\$59,961
Single-Parent Families		47%	33%
Highest Educational Level for Adults Age 25+			
College Degree		10%	23%
H.S. Diploma w/o College Degree		56%	63%
Less than 12th Grade Education		34%	14%

Preparation, Motivation & Parental Support

	School	District	State Average
1st-3rd Graders Receiving Reading Remediation		49%	36%
Average Number of Days Absent per Student	14.5	11.2	9.3
Mobility Rate (Incoming Students)	14%	10%	11%
Suspension to Student Ratio: (<i>Higher ratio is better.</i>)			
There was 1 suspension (of 10 days or less) for every ___ students	3.0	10.5	11.6
There was 1 suspension (of more than 10 days) for every ___ students	94.0	390.0	127.3
Parents Attending Parent/Teacher Conference	40%	68%	73%
Patrons' Volunteer Hours per Student	1.4	0.5	3.2

Juvenile Offenders & Offenses (Office of Juvenile Affairs)*

	School	District	State Average
One out of every ___ students was charged. (<i>Higher ratio is better.</i>)		390.0	88.0
Of those charged, each averaged ___ offense(s).		1.0	2.0
Of those charged, ___ were alleged gang members.		0	0.5

*These statistics are provided as another indicator of the environment in which schools must operate. In most cases the offenses were not committed at school.

Symbols Used on this Report

DNA = Data Not Available
NA = Not Applicable

RM = Revised Methodology
ADM = Average Daily Membership (Average Enrollment)

FTE = Full Time Equivalent

** = Data Protected by Privacy Laws
FTR = School/District Failed to Respond with Useable Data

2011-2012 School Educational Process

Classroom & Administration Characteristics

	<u>School</u>	<u>District Total (All Schools)</u>	<u>High School State Average</u>
Fall Enrollment	94	390	361
Non-Special Ed. Teachers (FTE):			
Number of Teachers	7.3	24.4	20.8
Average Salary (w/ Fringe)	\$36,006	\$39,183	\$45,039
Teachers with Advanced Degree(s)	11.8%	13.5%	30.5%
Average Years of Experience	8.2	8.5	13.3
Students in Special Education	18.1%	22.6%	14.9%
Special Education Teachers (FTE)	0.7	2.0	2.8
Counselors (FTE)	0.2	0.2	1.3
Other Certified Professional Staff (FTE)	0.6	0.7	1.3
Administrators (FTE)	1.0	3.0	1.7

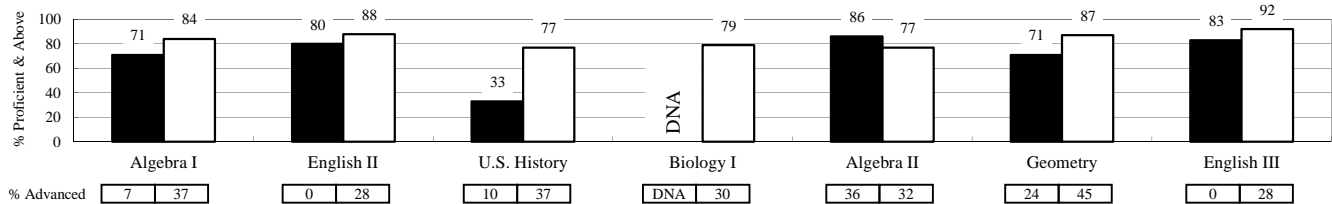
High School Curriculum (Units Offered in Selected Subject Areas)

Language Arts	5.0	8.1
Science	1.0	6.3
Math	6.0	6.6
Social Studies	4.5	5.6
Fine Arts	2.0	6.9
Languages (non-English)	2.0	2.9
Total	20.5	36.5

2011-2012 Student Performance

High School End-of-Instruction Tests*

Results for non-high school students may be posted on the K-8 report card.



*Test results were only calculated for Regular Education-Full Academic Year students.

■ This School □ State Average

Additional High School Performance Measures

	<u>This School</u>	<u>District</u>	<u>High School State Average</u>
Senior Graduation Rate (2012 Seniors)	80.0%	80.0%	97.7%
4-Year Dropout Rate (Class of 2012)	20.0%	20.0%	9.7%
Average GPA of HS Seniors (2012 Seniors)	3.0	3.0	3.0
Career-Tech Occupationally-Specific Program Participation (2012 Seniors)	17.7%	17.7%	52.2%
Average ACT Score (Class of 2012)	**	**	20.8
HS Graduates Completing Regents' College-Bound Curriculum (2012 Seniors)	43.8%	43.8%	82.8%
Out-of-State College-Going Rate (2012 Seniors)	12.5%	12.5%	5.4%
Oklahoma College-Going Rate ('08~'10)	21.1%	21.1%	47.8%
Oklahoma College Freshmen taking at least one remedial course in Math, English, Science, or Reading ('09~'11)	55.6%	55.6%	39.9%