



2022 SCHOOL PROFILES

Office of Educational Quality and Accountability

5400 N Grand Blvd, Suite 200, Oklahoma City, OK, 73112 (405) 522-5399 Fax: (405) 525-0373 Web: <http://www.EdProfiles.info>

KINTA HS (9-12)

KINTA PUBLIC SCHOOLS

205 North Main Street, Kinta, OK 74552

Telephone: (918) 768-3338

31-1013-705

Community Characteristics

Community Group

H2

About this District:

KINTA

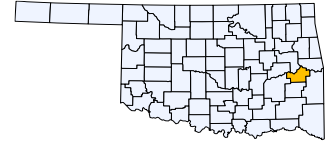
Square Miles Covered by District: 129.197577

Number of School Sites in District: 2

Telephone: (918) 768-3338

Post Office Box 219

Kinta, OK 74552



County: HASKELL

Student Demographics

	School	District	Community Group Average	State Average
Ethnic & Gender Makeup Based upon Fall Enrollment:				
Caucasian	34.0%	42.3%	48.2%	46.3%
Black	6.4%	6.1%	1.7%	7.9%
Asian	2.1%	1.2%	0.7%	2.6%
Hispanic	8.5%	5.5%	9.7%	19.3%
Native American	40.4%	37.4%	28.1%	11.6%
Two or More Races	8.5%	7.4%	11.5%	12.4%
Female	38.3%	45.4%	47.6%	48.7%
Male	61.7%	54.6%	52.4%	51.3%
Bilingual Students	0.0%	0.0%	4.2%	13.3%
Economically Disadvantaged Students	93.6%	93.3%	76.7%	55.9%
Average Property Valuation per Student	DNS	\$53,080	\$95,393	\$64,503

U.S. Census Data (American Community Survey 2017-2021 5-Year Estimate)

District Population		1,308	1,066	7,757
% of Population under 18		25.2%	23.4%	24.3%
% of Children under 18 Living in Married-Couple Household		84.2%	70.2%	65.5%
Average Household Income		\$61,373	\$62,607	\$78,040
Median Household Income		\$45,179	DNS	\$56,956
% of Population below Poverty		16.2%	17.0%	15.2%
Unemployment Rate		12.3%	5.8%	5.0%
Highest Educational Level for Adults Age 25+				
Without H.S. Diploma		15.7%	14.2%	11.3%
H.S. Diploma Only		38.5%	41.3%	30.8%
Some College Education but No Degree		20.9%	21.6%	22.9%
Associate's Degree		11.1%	7.1%	8.2%
Bachelor's Degree and Above		13.8%	15.8%	26.8%

Preparation, Motivation & Parental Support

KG-3rd Graders Receiving Reading Remediation	DNS	44.7%	45.2%	49.2%
Average Number of Days Absent per Student (based on 175 school days)	4.7	3.5	9.6	12.4
Mobility Rate (Incoming Students)	DNS	DNS	10.2%	9.8%
Student Suspension Ratio: (<i>Higher number is better.</i>)				
There was 1 suspension (of 10 days or less) for every ___ students.	DNS	DNS	24.0	15.6
There was 1 suspension (of more than 10 days) for every ___ students.	DNS	DNS	297.3	115.2
Parents Attending Parent/Teacher Conference	DNS	DNS	73%	72%
Patrons' Volunteer Hours per Student	DNS	DNS	2.2	1.3

Data Not Shown (DNS)

Possible Reasons: (1) Not Applicable

(2) Data Protected by Privacy Laws

(3) No Valid Data to Complete Calculation

2021-22 School Educational Process

Classroom & Administration Characteristics

	School	District	Community Group Average	State Average
Fall Enrollment	47	163	152	1,296
Average Enrollment throughout the Year (ADM)	47	167	150	1,284
% of Students Eligible for Free/Reduced Lunch	100.0%	100.0%	84.2%	52.3%
% of Students Identified as Gifted/Talented	29.8%	13.5%	10.5%	12.3%
% of Students as English Language Learners (ELL)	0.0%	0.0%	2.4%	9.7%
% of Students in Special Education	23.4%	28.2%	24.5%	15.6%
Non-Special Ed. Teachers (Based on Full Time Equivalent, FTE):				
Number of Teachers	5.1	14.6	12.0	70.9
Average Salary (w/ Fringe)	\$45,474	\$47,112	\$52,250	\$54,439
% of Teachers with Advanced Degree(s)	39.9%	17.7%	24.4%	24.5%
Average Years of Experience	12.0	14.6	14.2	12.0
Special Education Teachers (FTE)	0.4	0.9	0.8	8.6
Counselors (FTE)	0.1	0.1	0.4	3.5
Other Certified Professional Staff (FTE)	0.5	1.0	0.8	7.5
Administrators (FTE)	0.2	1.0	1.6	7.5
Teachers per Administrator	27.8	15.5	8.2	10.6
Average Salary (w/ Fringe) per Administrative FTE	\$120,610	\$130,240	\$85,048	\$92,198

High School Curriculum (Only for HS with 12th Grade)

% of Juniors & Seniors Taking Career-Tech Offered Courses	15.0%	15.0%	63.7%	44.0%
% of HS Graduates Completing Regents' College-Bound Curriculum	DNS	DNS	148.4%	81.5%
Average HS Course Offerings by Site				
Non-electives:				
Fine Arts	9	9.0	2.0	7.7
Science	9	9.0	3.7	6.2
Mathematics	4	4.0	3.8	5.4
Computer Education	1	1.0	1.8	2.2
Social Studies	6	6.0	5.2	7.2
English Language Arts (ELA)	4	4.0	4.2	4.8
World Languages	4	4.0	0.6	2.5
Electives	13	13.0	11.1	18.4
Total Number of Courses Offered	50	50.0	32.3	54.4

Sources of District Revenues (All Funds)

District	17.4%	35.2%	35.5%
County	1.0%	1.9%	2.5%
State Dedicated	5.9%	6.6%	6.3%
State Appropriated	35.2%	32.2%	36.1%
Federal	40.6%	24.1%	19.7%
Estimated % of Bonding Capacity Utilized (Estimate of Needs)	25.4%	22.3%	54.2%

District Expenditures (Bond Funds Excluded)

	District		Community Group		State	
	%	\$/ADM	%	\$/ADM	%	\$/ADM
Instruction	45.0%	\$7,092	48.7%	\$7,370	52.5%	\$5,537
Instructional Support	1.8%	\$278	2.4%	\$366	4.0%	\$423
Student Support	4.4%	\$688	5.7%	\$861	7.5%	\$793
School Administration	2.9%	\$464	4.6%	\$689	5.5%	\$575
District Administration	6.4%	\$1,007	6.3%	\$956	2.9%	\$305
District Support	19.5%	\$3,067	22.7%	\$3,436	19.1%	\$2,019
Other	20.1%	\$3,171	9.7%	\$1,465	8.5%	\$895
Total		\$15,768		\$15,144		\$10,547
Debt Service in Addition to Above		\$360		\$577		\$1,211

Data Not Shown (DNS)

Possible Reasons: (1) Not Applicable

(2) Data Protected by Privacy Laws

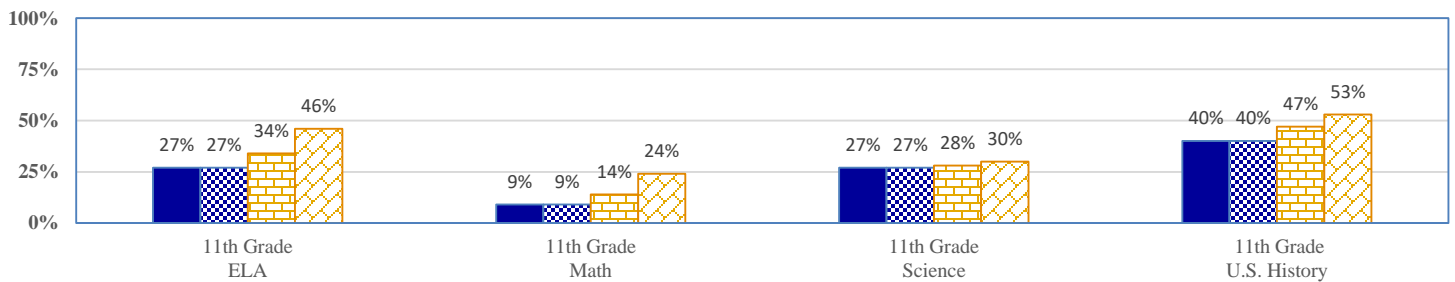
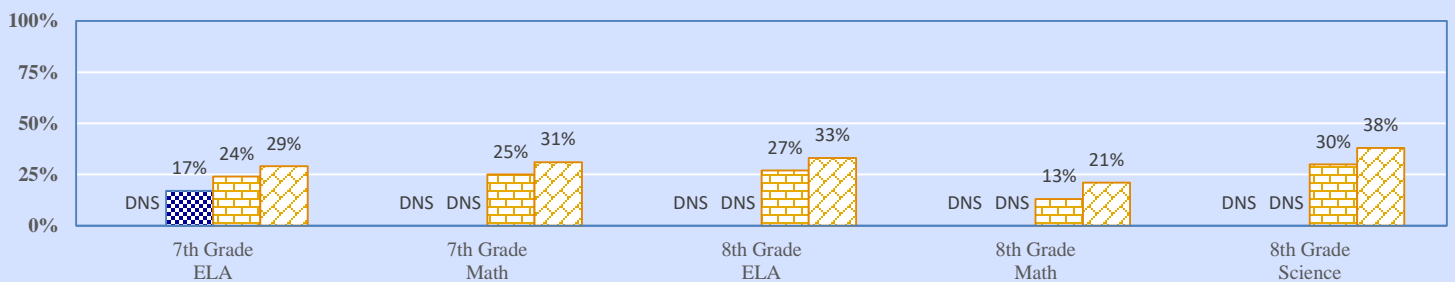
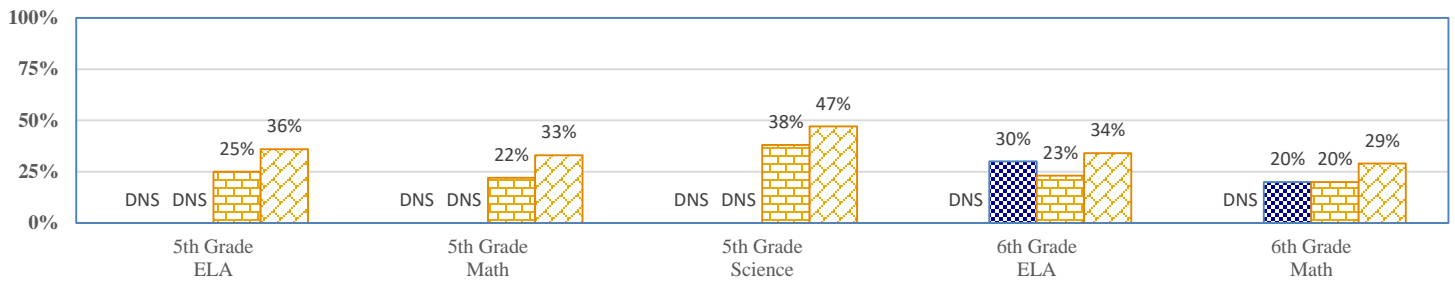
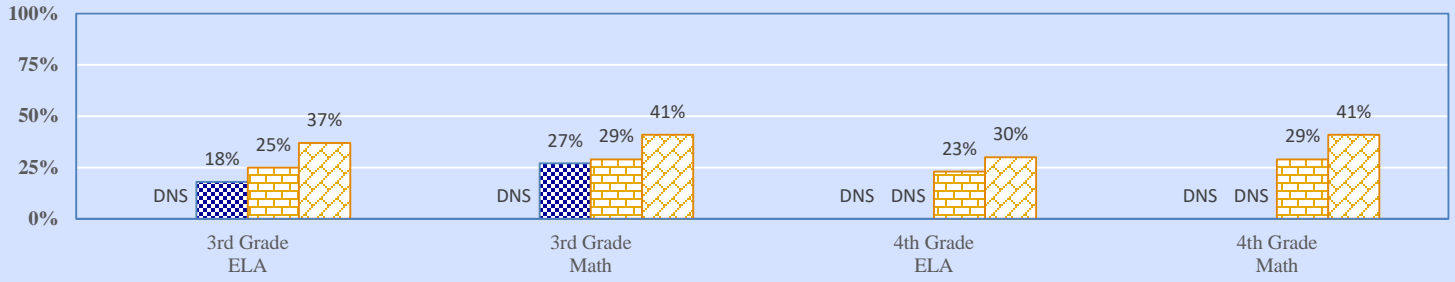
(3) No Valid Data to Complete Calculation

2021-22 Student Performance (Regular Education Students, Full Academic Year at This Site)



The state of Oklahoma adopted much higher performance standards in 2017. The test results are therefore not comparable to those from previous years.

% of Students Scoring Proficient and Above by Grade and Subject



School
 District
 Community Group
 State

Data Not Shown (DNS)

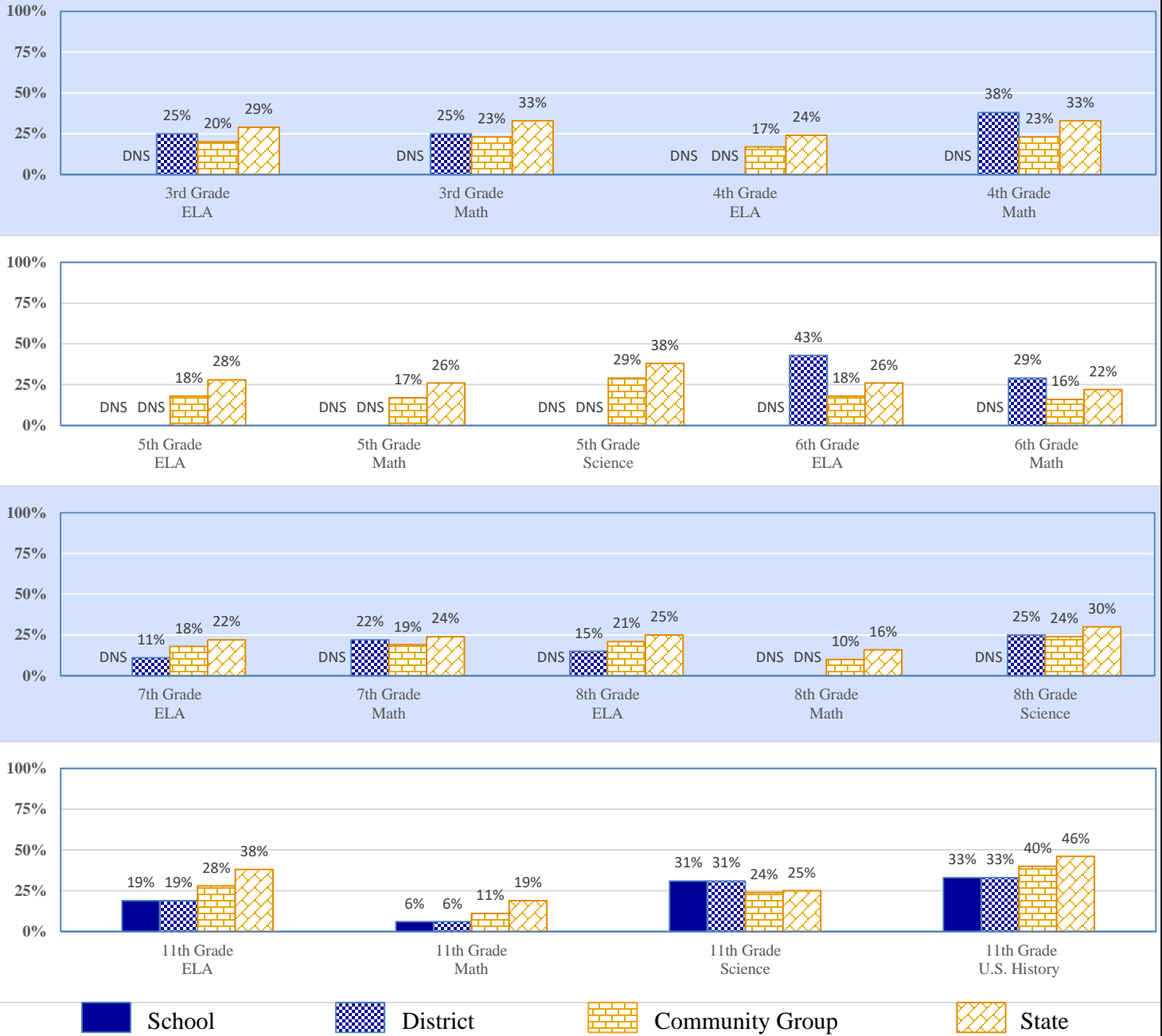
Possible Reasons: (1) Not Applicable

(2) Data Protected by Privacy Laws

(3) No Valid Data to Complete Calculation

2021-22 Student Performance (All Students)

% of Students Scoring Proficient and Above by Grade and Subject



Additional High School Performance Measures

	This School	District	Community Group Average	High School State Average
Senior Graduation Rate	100.0%	100.0%	96.8%	94.6%
HS (Grades: 9th-12th) Dropout Rate	0.0%	0.0%	3.5%	4.9%
Average GPA of HS Seniors	DNS	DNS	3.2	3.1
Average ACT Score of HS Graduates (Based on the Highest Score)	DNS	DNS	16.7	18.1
% of Graduates Earning the Oklahoma's Promise Scholarship	50.0%	50.0%	19.5%	13.4%
Out-of-State College-Going Rate	DNS	DNS	5.6%	6.9%
Oklahoma College-Going Rate (HS Classes of 2019-21)	48.6%	48.6%	30.7%	39.8%
Oklahoma College Freshmen Taking at Least One Remedial Course in Math, English, Science, or Reading (HS Classes of 2019-21)	43.8%	43.8%	27.1%	23.0%
Oklahoma College Freshmen with GPA 2.0 or Above (HS Classes of 2019-21)	50.0%	50.0%	71.9%	72.6%
Average Number (by Site) of Oklahoma College Degrees Conferred to HS Graduates (in College Year 2021-22)	2	2.0	4.1	29.8