



# 2022 SCHOOL PROFILES

## Office of Educational Quality and Accountability

5400 N Grand Blvd, Suite 200, Oklahoma City, OK, 73112 (405) 522-5399 Fax: (405) 525-0373 Web: <http://www.EdProfiles.info>

### WEWOKA LEARNING CENTER (5-6)

#### WEWOKA PUBLIC SCHOOLS

800 S.Ocheese, WEWOKA, OK 74884

Telephone: (405) 257-2340

67-1002-515

## Community Characteristics

### Community Group

# F2

#### About this District:

##### WEWOKA

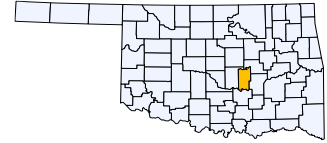
Square Miles Covered by District: 35.102884

Number of School Sites in District: 4

Telephone: (405) 257-2340

PO Box 870

WEWOKA, OK 74884



County: SEMINOLE

### Student Demographics

	School	District	Community Group Average	State Average
Ethnic & Gender Makeup Based upon Fall Enrollment:				
Caucasian	49.4%	35.4%	47.4%	46.3%
Black	8.0%	9.8%	2.3%	7.9%
Asian	0.0%	0.3%	0.9%	2.6%
Hispanic	3.4%	5.5%	9.5%	19.3%
Native American	20.7%	23.5%	28.4%	11.6%
Two or More Races	18.4%	25.6%	11.4%	12.4%
Female	49.4%	50.8%	48.1%	48.7%
Male	50.6%	49.2%	51.9%	51.3%
Bilingual Students	1.1%	0.3%	4.6%	13.3%
Economically Disadvantaged Students	88.5%	85.7%	69.7%	55.9%
Average Property Valuation per Student	DNS	\$24,393	\$46,668	\$64,503

### U.S. Census Data (American Community Survey 2017-2021 5-Year Estimate)

District Population		4,009	3,963	7,757
% of Population under 18		23.8%	23.0%	24.3%
% of Children under 18 Living in Married-Couple Household		51.5%	62.7%	65.5%
Average Household Income		\$46,533	\$61,813	\$78,040
Median Household Income		\$35,915	DNS	\$56,956
% of Population below Poverty		25.6%	18.5%	15.2%
Unemployment Rate		11.1%	5.9%	5.0%
Highest Educational Level for Adults Age 25+				
Without H.S. Diploma		18.5%	14.6%	11.3%
H.S. Diploma Only		35.3%	39.7%	30.8%
Some College Education but No Degree		26.9%	23.0%	22.9%
Associate's Degree		7.7%	7.8%	8.2%
Bachelor's Degree and Above		11.6%	14.9%	26.8%

### Preparation, Motivation & Parental Support

KG-3rd Graders Receiving Reading Remediation	DNS	63.5%	48.8%	49.2%
Average Number of Days Absent per Student (based on 175 school days)	8.2	11.9	10.9	12.4
Mobility Rate (Incoming Students)	10.3%	19.6%	7.9%	9.8%
Student Suspension Ratio: ( <i>Higher number is better.</i> )				
There was 1 suspension (of 10 days or less) for every ___ students.	6.7	8.9	20.9	15.6
There was 1 suspension (of more than 10 days) for every ___ students.	87.0	67.3	162.4	115.2
Parents Attending Parent/Teacher Conference	79%	61%	68%	72%
Patrons' Volunteer Hours per Student	6.9	3.2	1.2	1.3

#### Data Not Shown (DNS)

Possible Reasons: (1) Not Applicable

(2) Data Protected by Privacy Laws

(3) No Valid Data to Complete Calculation

## 2021-22 School Educational Process

### Classroom & Administration Characteristics

	School	District	Community Group Average	State Average
Fall Enrollment	87	673	712	1,296
Average Enrollment throughout the Year (ADM)	89	668	705	1,284
% of Students Eligible for Free/Reduced Lunch	100.0%	100.0%	72.4%	52.3%
% of Students Identified as Gifted/Talented	19.5%	11.9%	12.6%	12.3%
% of Students as English Language Learners (ELL)	1.1%	0.3%	2.9%	9.7%
% of Students in Special Education	37.9%	29.0%	21.1%	15.6%
Non-Special Ed. Teachers (Based on Full Time Equivalent, FTE):				
Number of Teachers	4.0	44.0	45.6	70.9
Average Salary (w/ Fringe)	\$46,324	\$49,093	\$52,611	\$54,439
% of Teachers with Advanced Degree(s)	0.0%	10.2%	23.1%	24.5%
Average Years of Experience	1.9	5.5	13.7	12.0
Special Education Teachers (FTE)	0.0	4.0	4.6	8.6
Counselors (FTE)	0.3	3.9	2.0	3.5
Other Certified Professional Staff (FTE)	0.3	3.9	3.4	7.5
Administrators (FTE)	0.5	4.0	4.6	7.5
Teachers per Administrator	8.8	12.0	11.0	10.6
Average Salary (w/ Fringe) per Administrative FTE	\$76,596	\$94,951	\$88,753	\$92,198

### High School Curriculum (Only for HS with 12th Grade)

% of Juniors & Seniors Taking Career-Tech Offered Courses	DNS	45.9%	61.5%	44.0%
% of HS Graduates Completing Regents' College-Bound Curriculum	DNS	87.0%	80.8%	81.5%
Average HS Course Offerings by Site				
Non-electives:				
Fine Arts	DNS	10.0	6.6	7.7
Science	DNS	6.0	5.7	6.2
Mathematics	DNS	5.0	5.2	5.4
Computer Education	DNS	2.0	2.0	2.2
Social Studies	DNS	8.0	6.2	7.2
English Language Arts (ELA)	DNS	4.0	4.7	4.8
World Languages	DNS	0.0	1.9	2.5
Electives	DNS	20.0	18.3	18.4
Total Number of Courses Offered	DNS	55.0	50.6	54.4

### Sources of District Revenues (All Funds)

District	13.9%	26.2%	35.5%
County	1.6%	2.1%	2.5%
State Dedicated	5.7%	8.5%	6.3%
State Appropriated	42.5%	38.5%	36.1%
Federal	36.3%	24.8%	19.7%
Estimated % of Bonding Capacity Utilized (Estimate of Needs)	77.0%	36.3%	54.2%

### District Expenditures (Bond Funds Excluded)

	District		Community Group		State	
	%	\$/ADM	%	\$/ADM	%	\$/ADM
Instruction	52.0%	\$7,035	52.8%	\$6,212	52.5%	\$5,537
Instructional Support	5.2%	\$699	2.5%	\$295	4.0%	\$423
Student Support	7.6%	\$1,024	6.7%	\$790	7.5%	\$793
School Administration	4.9%	\$664	5.2%	\$616	5.5%	\$575
District Administration	3.0%	\$402	3.5%	\$408	2.9%	\$305
District Support	21.9%	\$2,965	21.0%	\$2,473	19.1%	\$2,019
Other	5.5%	\$742	8.4%	\$983	8.5%	\$895
Total		\$13,531		\$11,776		\$10,547
Debt Service in Addition to Above		\$382		\$607		\$1,211

**Data Not Shown (DNS)**

Possible Reasons: (1) Not Applicable

(2) Data Protected by Privacy Laws

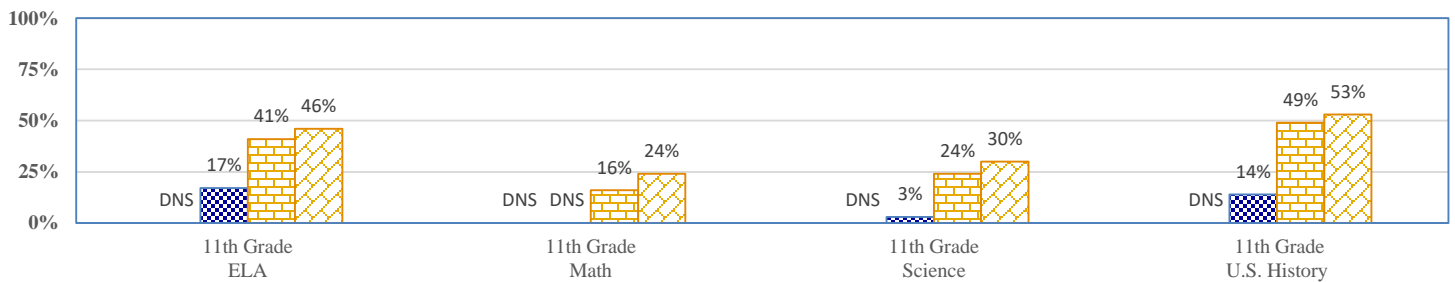
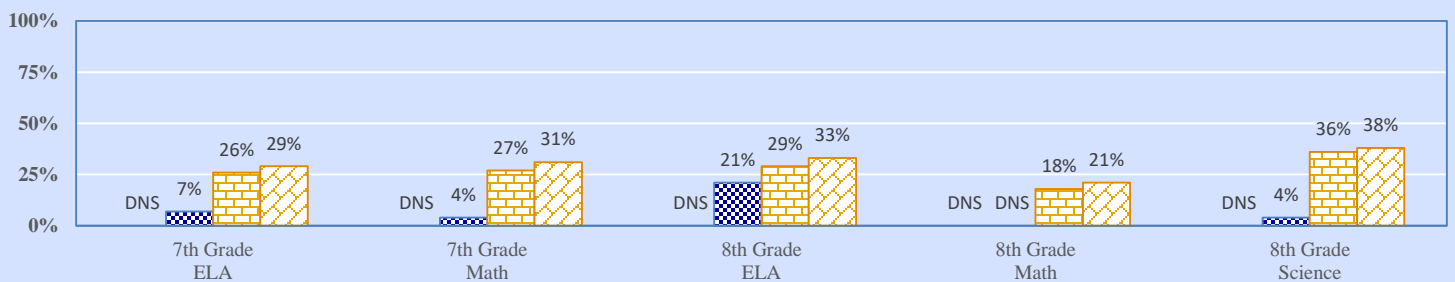
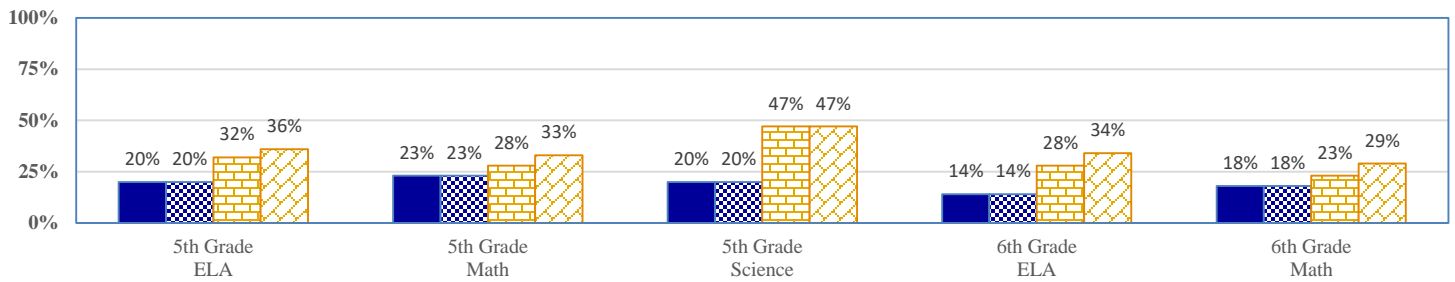
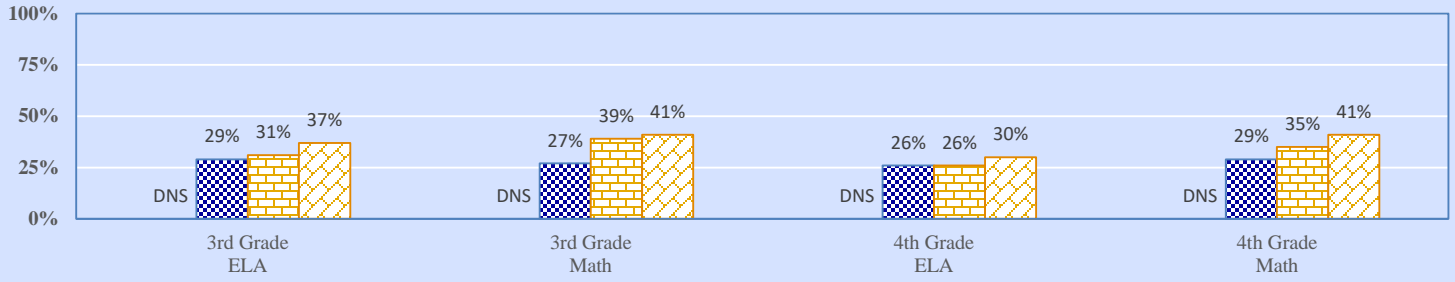
(3) No Valid Data to Complete Calculation

**2021-22 Student Performance** (Regular Education Students, Full Academic Year at This Site)



*The state of Oklahoma adopted much higher performance standards in 2017. The test results are therefore not comparable to those from previous years.*

**% of Students Scoring Proficient and Above by Grade and Subject**



School
  District
  Community Group
  State

**Data Not Shown (DNS)**

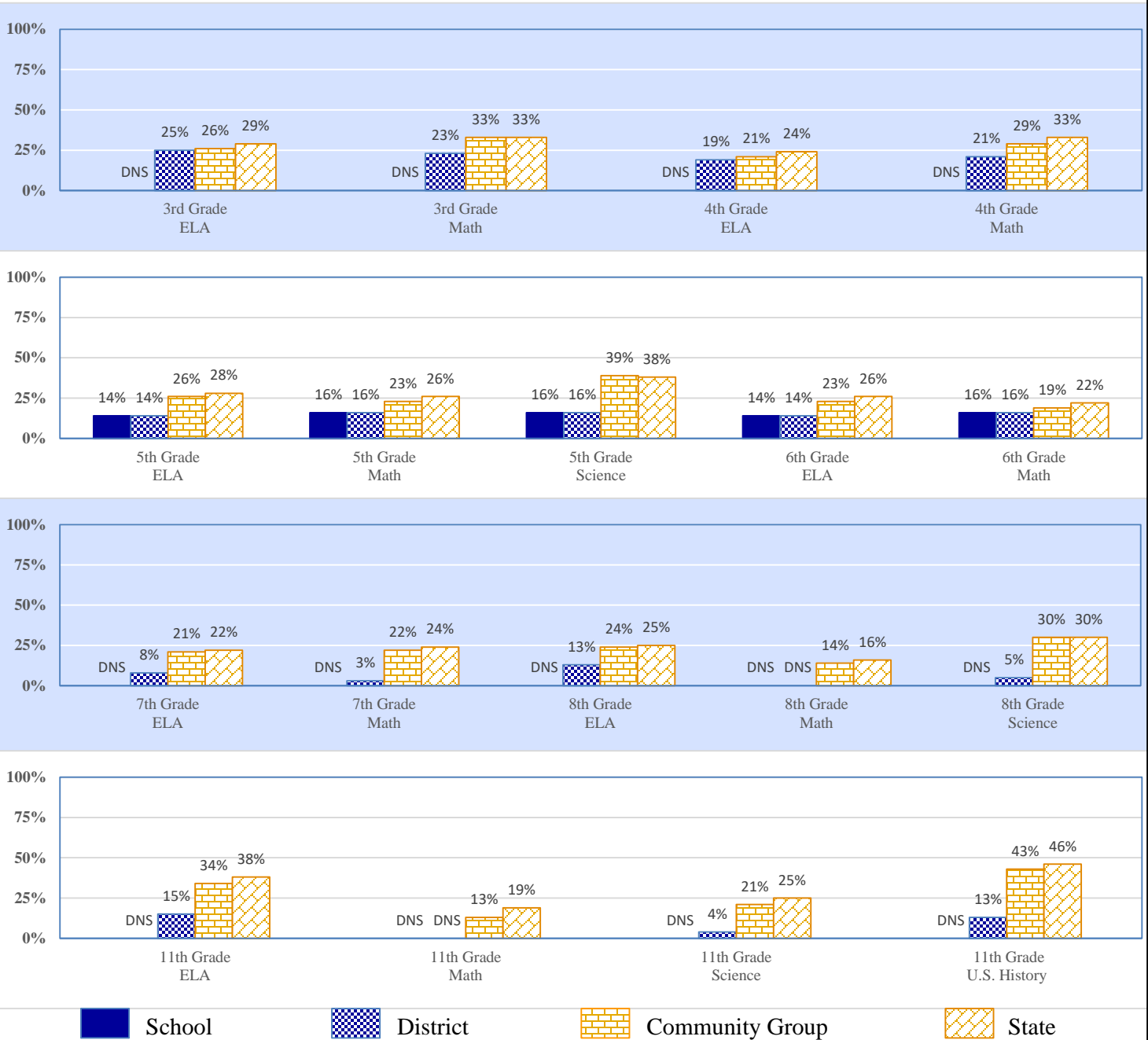
Possible Reasons: (1) Not Applicable

(2) Data Protected by Privacy Laws

(3) No Valid Data to Complete Calculation

## 2021-22 Student Performance (All Students)

### % of Students Scoring Proficient and Above by Grade and Subject



#### Additional High School Performance Measures

	This School	District	Community Group Average	High School State Average
Senior Graduation Rate	DNS	97.2%	97.6%	94.6%
HS (Grades: 9th-12th) Dropout Rate	DNS	6.1%	3.0%	4.9%
Average GPA of HS Seniors	DNS	2.9	3.2	3.1
Average ACT Score of HS Graduates (Based on the Highest Score)	DNS	15.4	17.3	18.1
% of Graduates Earning the Oklahoma's Promise Scholarship	DNS	14.5%	17.6%	13.4%
Out-of-State College-Going Rate	DNS	0.0%	4.8%	6.9%
Oklahoma College-Going Rate (HS Classes of 2019-21)	DNS	37.6%	35.2%	39.8%
Oklahoma College Freshmen Taking at Least One Remedial Course in Math, English, Science, or Reading (HS Classes of 2019-21)	DNS	27.7%	27.3%	23.0%
Oklahoma College Freshmen with GPA 2.0 or Above (HS Classes of 2019-21)	DNS	59.1%	72.0%	72.6%
Average Number (by Site) of Oklahoma College Degrees Conferred to HS Graduates (in College Year 2021-22)	DNS	13.0	15.5	29.8